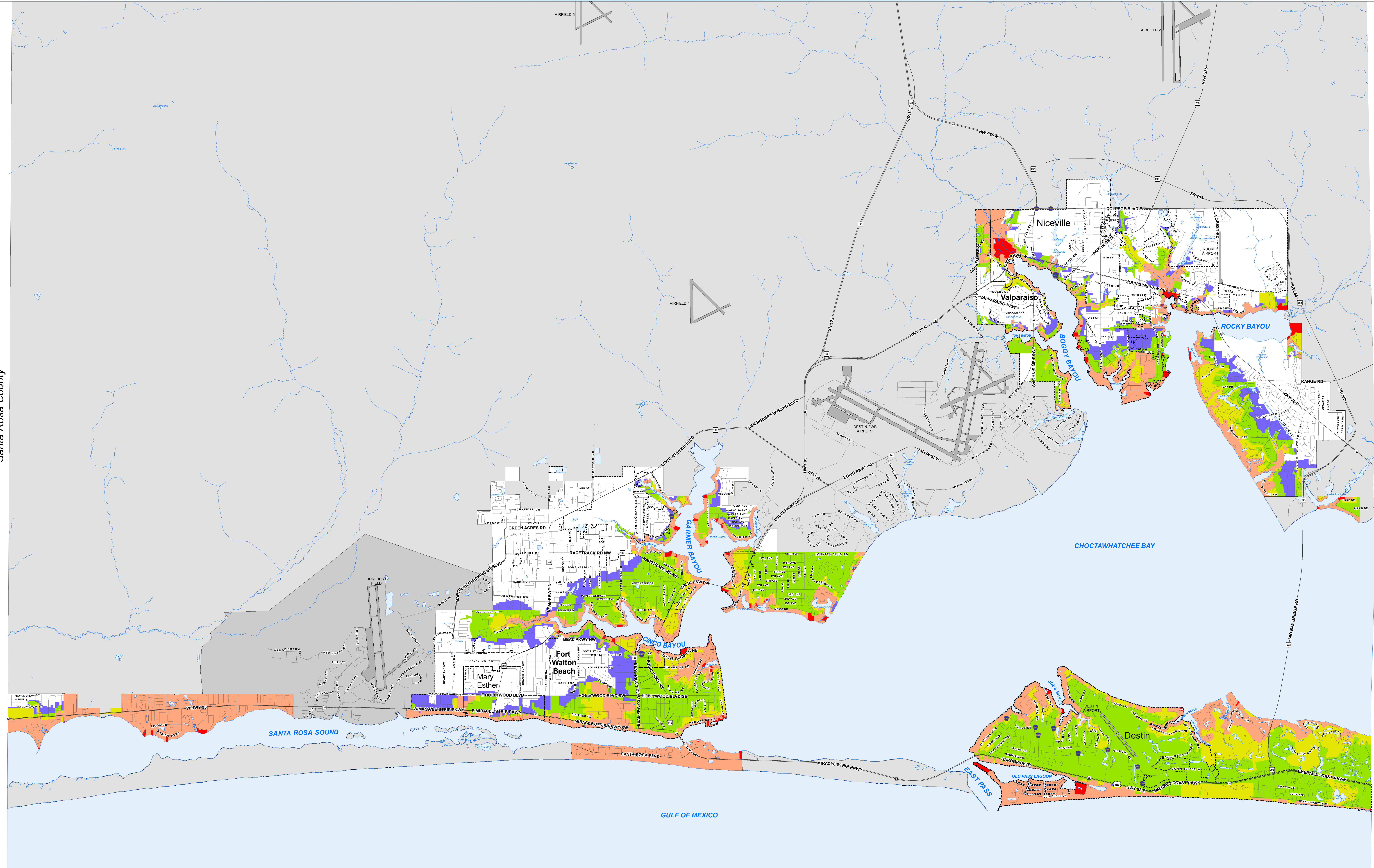


South Okaloosa County, Florida ~ ~ Evacuation Zones

Santa Rosa County

Walton County



Legend

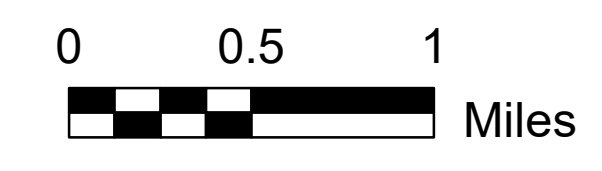
- Other Features**
- EGLIN AFB
 - HURLBURT FIELD
 - CITY LIMITS
 - PROPERTY LINES

- Evacuation Zones**
- ZONE A** *Includes all mobile homes, campsites, and other high-risk surge areas should be evacuated.*
 - ZONE B** *Including Zone A should be evacuated.*
 - ZONE C** *Including Zones A and B should be evacuated.*
 - ZONE D** *Including Zones A, B, and C should be evacuated.*
 - ZONE E** *Including Zones A, B, C, and D should be evacuated.*

OKALOOSA COUNTY
CONTACT OKALOOSA COUNTY EMERGENCY MANAGEMENT AT (850)-651-7150 FOR ADDITIONAL INFORMATION.

EGLIN AIR FORCE BASE
CONTACT EGLIN AIR FORCE BASE EOC FOR BASE EVACUATION INFORMATION. IF ON EGLIN (850)-882-3388

HURLBURT AIR FORCE BASE
CONTACT HURLBURT EOC FOR BASE EVACUATION INFORMATION IF ON HURLBURT CALL (850)-884-1145 FOR ADDITIONAL INFORMATION



Produced by:
Okaloosa County GIS
6/7/2024

PDF maps are georeferenced. With the appropriate software, GPS location can be viewed on the map in mobile devices.

MAP PROJECTION:
Lambert Conformal Conic Projection
Stateplane, Florida North (0903)
NAD 1983, NAD 1983

PUBLIC RECORD:
This map was created by Okaloosa County GIS and is in the public domain pursuant to Chapter 119, Florida Statutes.

DISCLAIMER:
Okaloosa County hereby expressly disclaims any liability for errors or omissions in these maps, indexes or legends. Okaloosa County makes no warranties, expressed or implied, concerning the accuracy, completeness or suitability of this data.

PARCEL DISCLAIMER:
This Property Ownership Map was prepared for appraisal purposes only. It is not intended for conveyances, nor is it a survey.

