

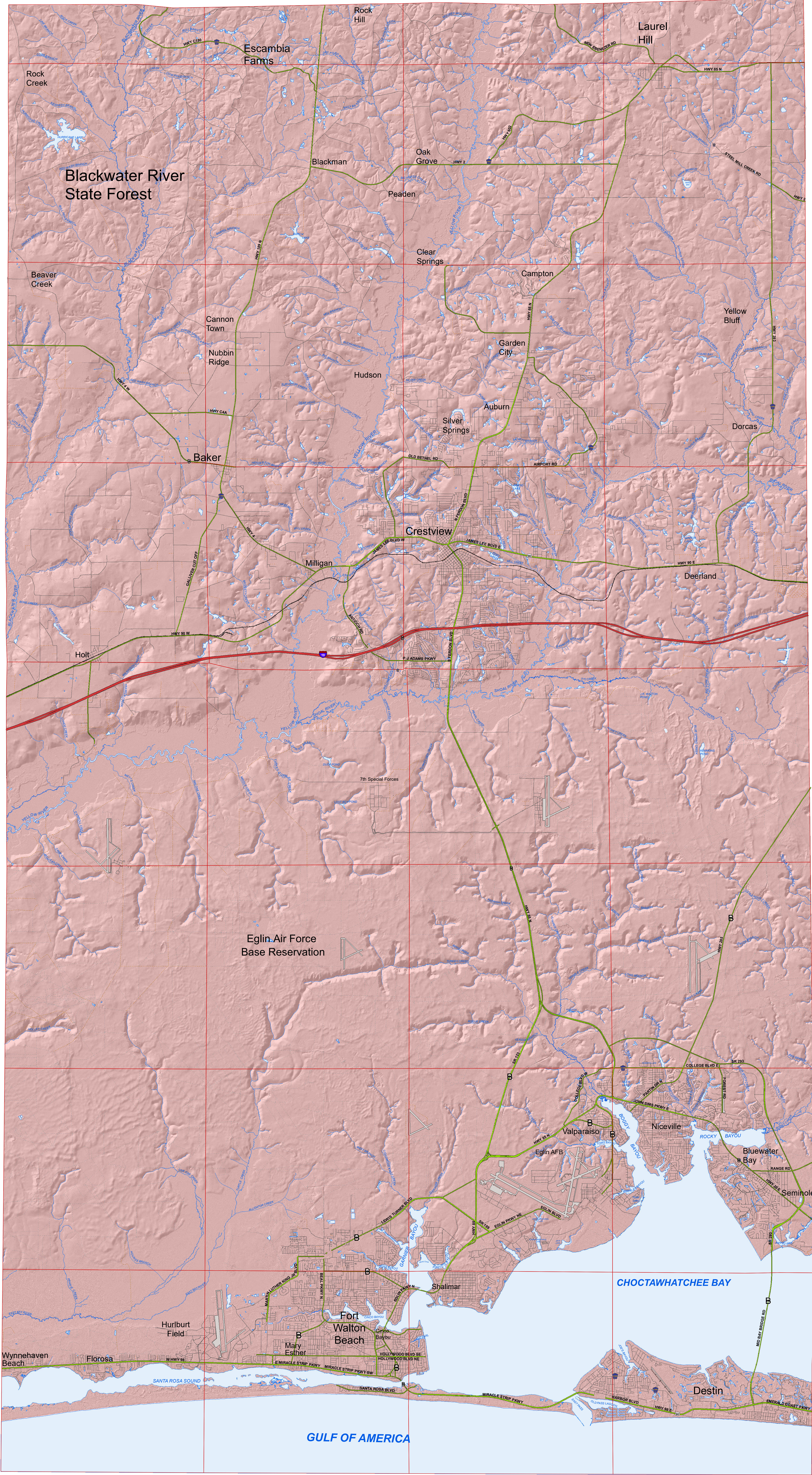
Alabama

CONGRESS
DISTRICT 1
OKALOOSA COUNTY

- MATT GAETZ
- T2S TOWNSHIP/RANGE LINE
- INTERSTATE
- PRIMARY ROAD
- SECONDARY ROAD
- UNPAVED ROAD
- RAILROADS

Santa Rosa County

Walton County



2010 FINAL CENSUS COUNTY	
AREA	POPULATION
CINCO BAYOU	383
CRESTVIEW	20,976
DESTIN	12,305
EGLIN AFB CDP	4,940
FT WALTON BEACH	19,307
LAUREL HILL	537
MARY ESTHER	3,851
NICEVILLE	12,749
SHALIMAR	717
VALPARAISO	5,036
WRIGHT CDP	23,127
OTHER	76,683
TOTAL	180,683

Okaloosa County is a county located in Northwest Florida and is bordered on the north by Alabama, on the south by Mexico, and on the east by the Gulf of Mexico. Located in the panhandle of Florida, Okaloosa County was formed in 1915 and its county seat is Crestview.

Eglin Air Force Base, the largest military reservation in the United States, is located in the county. Okaloosa County claims the greatest percentage.

According to the U.S. Census Bureau, the county has a total area of 1,082 square miles, of which, 936 square miles of it is land and 146 square miles of it (13.53%) is water. The range of elevation is 0-235 feet.

The Emerald Coast is a popular vacation spot due to its miles of white sandy beaches and cool emerald green water.

The average annual climate is 68-47° with an average summer temperature of 80°; an average winter temperature of 51°; and an average annual rain fall of 64 inches.

GIS GRID:
The GIS grid number 8202 is composed of the GIS township designator and the section number. The number 02 is the GIS township designator and the number 02 is the section number, except in Destin, it is miles north and miles west.

DISCLAIMER:
Section, Township and Range lines are approximate and for illustrative purposes only.

MAP PROJECTION:
Lambert Conformal Conic Projection
Spheroid: Florida North (1983) NAD
1983(90), NAVD 1983.

PUBLIC RECORD:
This map was created by Okaloosa County GIS and is in the public domain pursuant to Chapter 118, Florida Statutes.

DISCLAIMER:
Okaloosa County hereby expressly disclaims any liability for errors or omissions in these maps, indexes or legends.

